



Processors & Mix Tanks

Proudly serving the food, dairy, beverage & chemical industry for nearly a decade.



Jacketed Processors and Mix Tanks

Anco processors are designed to heat and cool a variety of dairy, beverage, food, and many other fluid processing applications.

Anco offers Single Shell tanks as an option when heating or cooling is not necessary.

Each tank's size, dimensions, cover, bottom design, and agitator are customized to the client's application.



Standard Features: Jacketed Process Tank

Food Grade Sew Euro-drive motorgear

Interior wall 11 gauge 304ss, #4 finish (316 option)

Stainless steel dimple plated jacket

Exterior wall 14 gauge 304 Stainless Steel, No. 4 finish

Polyurethane insulation

1-4 heating zones

17" to 20" manway or wing doors

Tank vent on dome-top design

Bottom sweep agitation

Baffle(s)

2 stainless steel CIP spray balls

1.5" FNPT Standard Jacket Ports (customization upon request)

1.5" to 6" Tri Clamp Ferrule options

Thermowell

Adjustable Ball Feet or Heavy Duty Casters



Standard Features: Single Wall Mix Tank

Food Grade Sew Euro-drive motorgear

Single wall 11 gauge 304 Stainless Steel with No. 4 finish

17" to 20" Manway or Wing Doors

Tank Vent

Bottom sweep agitation

Baffle(s)

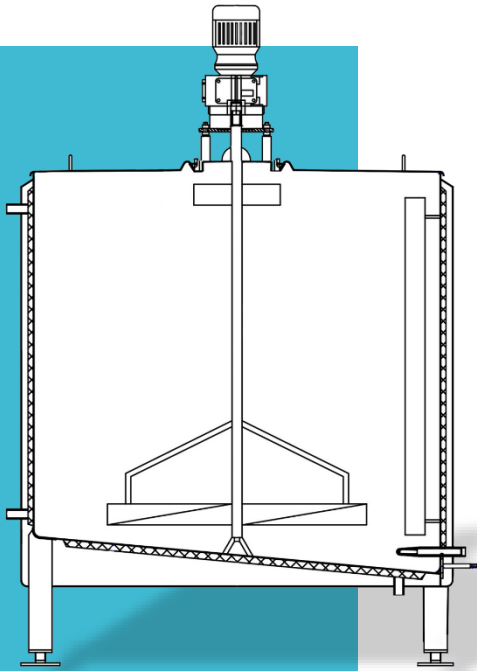
2 Stainless CIP Spray Balls Standard (customization available)

1.5" to 6" Tri Clamp Ferrule options

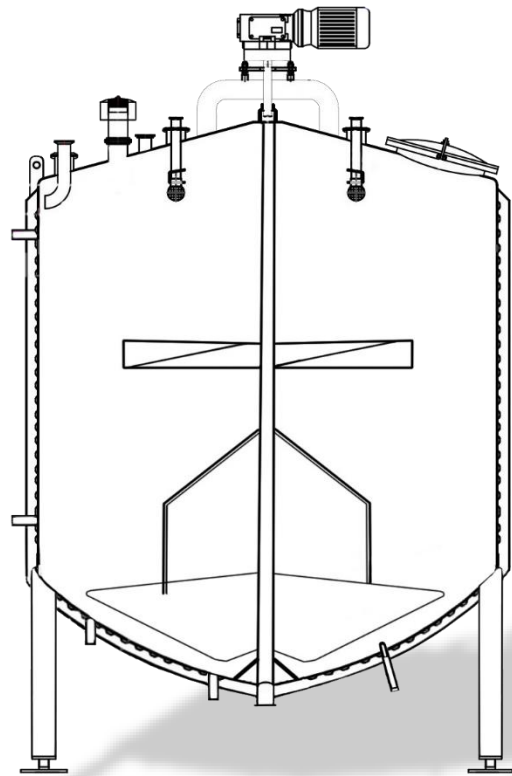
Adjustable Ball Feet or Heavy Duty Casters



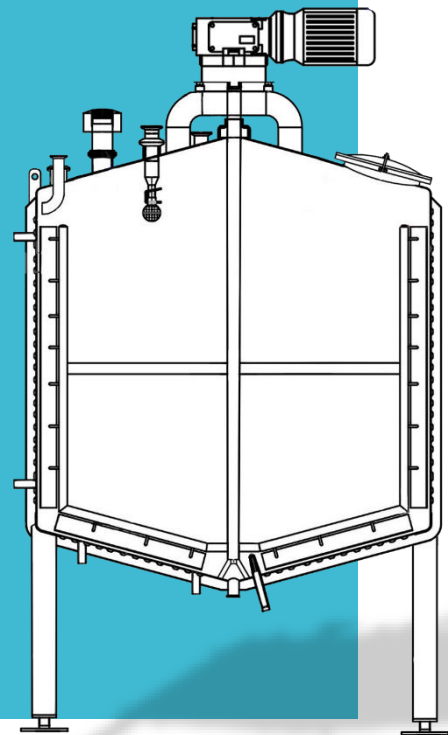
Tank Bottom Designs



Slope Bottom Design



Dish Bottom Design



Cone Bottom Design

Processor Sizes & Tank Top Options



Wing Top with Center Bridge



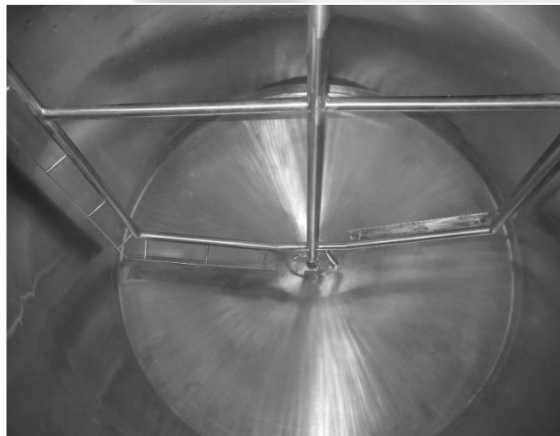
Dome Top with Manway

Wing-Top Design Capacity	Dome-Top Design Capacity
50 -2,000 Gallon in Size	200-3,000 Gallon in Size

Agitation Design Options



Bottom Sweep Agitation



Full Sweep Agitation



Side Scrape Agitation

Anco offers a variety of agitator design options for different product applications.



Contact us !

Email: info@ancoequipment.com

Phone: (920) 569-3530

Mailing Address: 1070 East Glenbrook Drive
Pulaski, Wisconsin 54162

www.ancoequipment.com