



Stainless Steel Process Tank



Capacity: 2,000 Gallons/7571 Liters with 20% Head Space

Power: SEW-Eurodrive 3 HP Gearmotor, Single or Three Phase

Agitation: Standard Blade Bottom Agitation

Heating: Min. 3,000,000 BTU Hot Water or Steam Boiler is Required

Jacket: Dimple Plate, Bottom & (2) Side Zones, Max. 70 PSI, Max. 50 GPM

Ports: (2) 1.5" TC Ports or (2) Thermowells for the Product and Indicating Thermometer, (2) 1.5" TC CIP Sprayballs Ports, (1) TC Inlet Port, and (2) Lifting Lugs

Lid: Flat Top with Center Bridge or Manway Cover

Bottom: Slight Pitch Toward Outlet

Insulation: Polyurethane

Walls: 304 Stainless Steel, No. 4 Finish (316 SS Available)

Legs: (4) Stainless Legs with Adjustable Ball Feet

Outlet: 2" Leak Detect Valve Ready

Dimensions: TBD

2,000 GALLON PROCESS TANK LIST PRICE

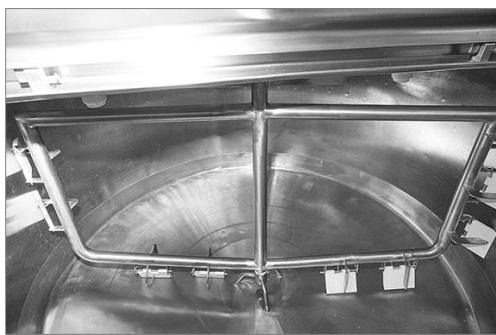
\$ 47,000.00

Add-On Features :

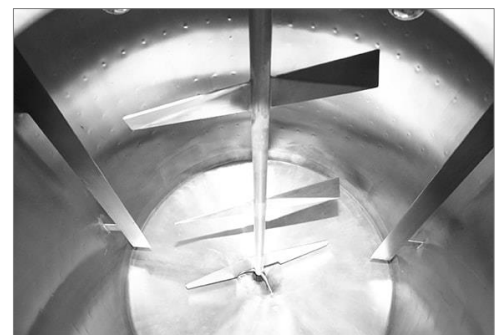
316 Stainless Steel Interior-Extra Corrosion Protection for Product Contact Surface Area	\$	5,000.00
Cone or Dish Bottom Tank Design - no additional charge	\$	-
Side and Bottom Scrape Agitation	\$	4,500.00
Full Sweep Agitation	\$	3,500.00



Full Sweep Agitation



Full Scrape Agitation



Bottom, Middle & Top Blade Agitation