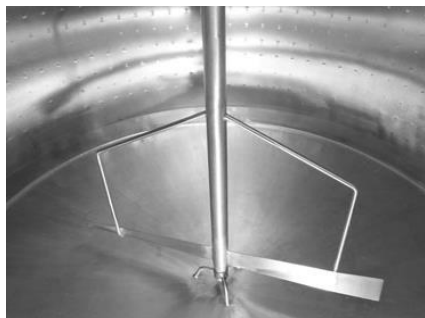




## Wing Top Batch Pasteurizer

- Capacity:** 500 Gallons/1893 Liters with 20% Head Space
- Power:** SEW-Eurodrive 1.5 HP Gearmotor, Single or Three Phase
- Agitation:** Standard Blade Bottom Agitation
- Heating:** Min. 750,000 BTU Hot Water or Steam Boiler is Required
- Jacket:** Dimple Plate, Bottom & Side Zone, Max. 70 PSI, Max. 50 GPM
- Ports:** (2) 1.5" TC Ports or (2) Thermowells for the Product and Indicating Thermometer, (1) 1.5" Airspace TC Port, (2) 1.5" TC CIP Sprayballs Ports, (1) 3" TC Airspace Element Port, (1) TC Milk Inlet Port, and (2) Lifting Lugs
- Lid:** Flat Top with Center Bridge. The (2) Hinge Lids are Removable
- Bottom:** Slight Pitch Toward Outlet
- Insulation:** Polyurethane
- Walls:** 304 Stainless Steel, No. 4 Finish (316 SS Available)
- Legs:** (4) Stainless Legs with Adjustable Ball Feet
- Outlet:** 2" Leak Detect Valve Ready
- Dimensions:** TBD



### Pasteurizer with Agitation:

**\$ 26,500.00**

### Additional Pasteurizing Accessories:

Anderson-Negele Chart Recorder, Product & Airspace Probe	\$ 3,500.00
Leak Detection Valve, Gasket, and Food Grade Lubricant	\$ 1,800.00
Airspace Heater 1,250 Watt, Single Phase, 10 Amp Element & NEMA 4 Rheostat Controller	\$ 1,600.00

### BATCH PASTEURIZER WITH FULL PMO ACCESSORIES

**\$ 33,400.00**

### Add-On Features :

316 Stainless Steel Interior-Extra Corrosion Protection for Product Contact Surface Area	\$ 2,400.00
Cone or Dish Bottom Tank Design - <b>no additional charge</b>	\$ -
Side and Bottom Scrape Agitation	\$ 2,400.00
Full Sweep Agitation	\$ 2,000.00